



# 11 REASONS TO USE CHAMPION BRIDGE DRAIN™ FOR BRIDGE PROJECTS

Champion Bridge Drain is a lightweight, corrosion-resistant and customizable drainage solution for bridges. The system contains all the fittings, non-metallic accessories, and hangers necessary to construct a bridge drain for roadway bridges and freeway overpasses, as well as parking garages. [Champion Bridge Drain](#) is the best choice in highly corrosive drainage applications due to its versatile, high-strength design.



# HERE ARE 11 REASONS YOU CAN RELY ON CHAMPION BRIDGE DRAIN FOR PROPER DRAINAGE ON BRIDGE PROJECTS:

## 1. Strength and Durability

Champion Bridge Drain is made using epoxy resin for ultimate strength, corrosion resistance, and flame retardancy. As a composite material, Champion Fiberglass Bridge Drain is incredibly strong based on its high glass to resin (70% vs 30%) ratio. The higher glass content makes the bridge drain much stronger, stiffer and impact resistant. Fiberglass is engineered to handle loads and conditions found in corrosive environments, and its durability helps contribute to long term project success. It provides an excellent drainage system for roads containing significant volumes of water, thereby creating a safe driving environment for motorists.

## 2. Corrosion Resistance

As a high-performance, versatile drainage system, Champion Bridge Drain is designed to be used for environmentally unfriendly drainage such as elevated roadway surfaces and bridges. It is engineered to handle harsh conditions as the epoxy resins enable it to withstand strong contaminants like gas, oil and road salt commonly carried in water.

## 3. Light Weight

Champion Bridge Drain weighs just one-fifth the weight of comparable-sized cast iron and PVC drainage systems. Champion Fiberglass Bridge Drain significantly reduces dead load on bridges, while offering the lowest weight per square foot without compromising strength.

## 4. Lower Installations Costs

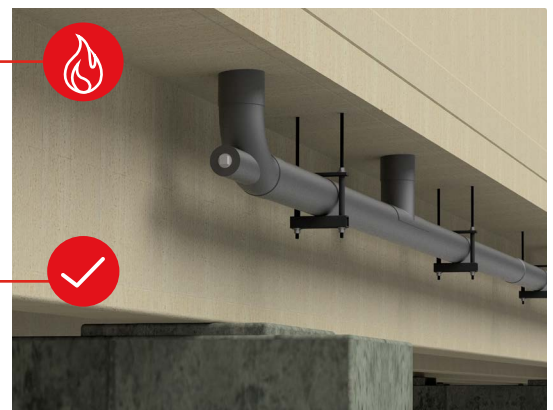
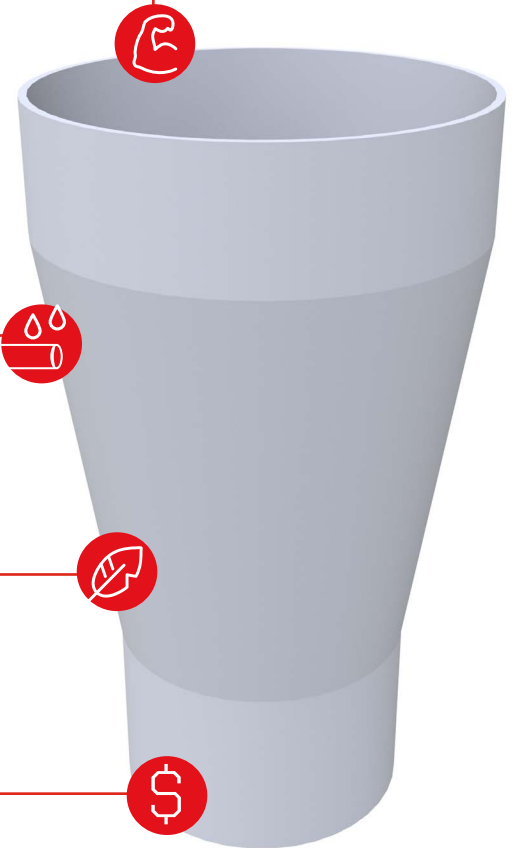
In addition to low material costs, Champion Bridge Drain also offers cost-efficient installation. The fiberglass components are much lighter than steel and easier to cut, drill, and assemble than PVC or steel bridge drains. The result is a significant reduction in labor costs.

## 5. Broad Temperature Range and UV-stable

Champion Bridge Drain can withstand temperatures between -60° and +250° F and performs well at low temperatures, which allows year-round installation. It is UV stable so it won't degrade in constant sunlight.

## 6. Easier Field Handling

Champion Bridge Drain's light weight encourages better portability in the field. It offers ease of cutting and an integral bell and spigot design that facilitates a simple, fast installation.



# HERE ARE 11 REASONS YOU CAN RELY ON CHAMPION BRIDGE DRAIN FOR PROPER DRAINAGE ON BRIDGE PROJECTS:

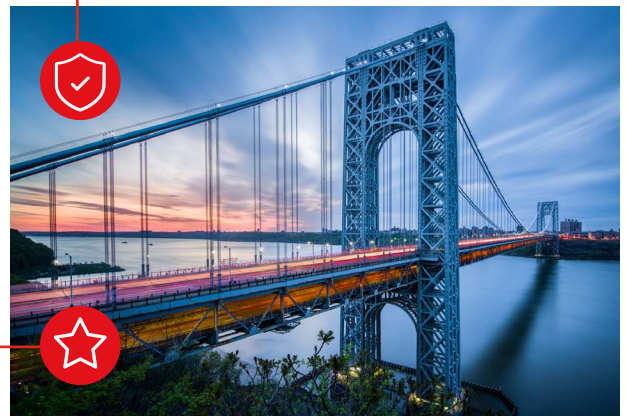
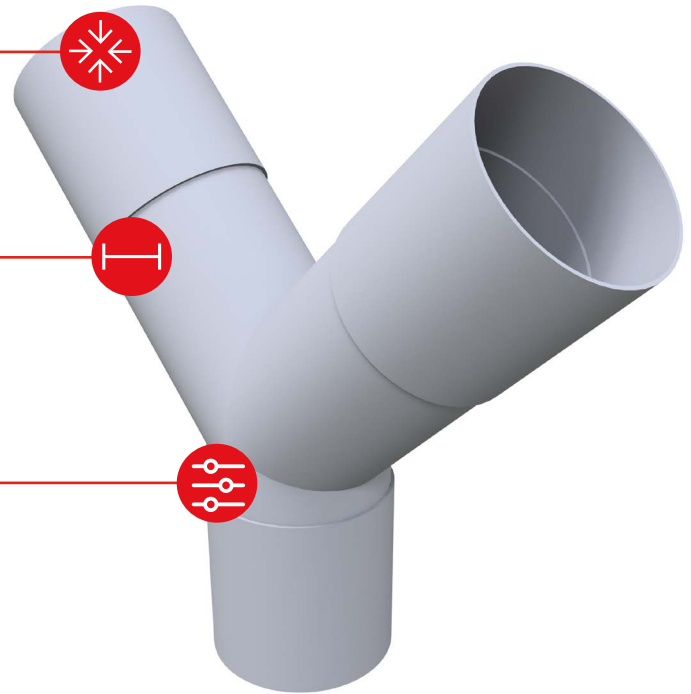
**7. High-impact Resistance** — In addition to being strong and impact resistant, Champion Bridge Drain is capable of retaining its original shape after impact.

**8. Extended Support Spans** — Champion Bridge Drain offers extended support spans compared to SCH 40 PVC bridge drain systems. This saves installation labor and material costs for the additional supports required for PVC drainage systems.

**9. Customization** — Besides providing a wide range of sizes, the Champion Fiberglass® team works closely with customers to develop custom solutions, whether it's a UV-resistant coating specific to the climate and sun exposure in your location or a customized color match.

**10. Triple ISO-certified Facility** — Our Spring, Texas facility strives to meet all industry standards and certifications demonstrating our corporate commitment to environmental and system management requirements. In addition to being ISO 9001 and 14001 certified, Champion Fiberglass' occupational health and safety management system has [received the ISO 45001 certification](#) for promoting a safe and healthy workplace.

**11. Customer Support** — Since 1988, Champion Fiberglass has been helping engineers, contractors and project owners provide creative solutions to reach successful outcomes in industrial construction projects with its fiberglass conduit, strut and bridge drain products. The Champion Fiberglass team enjoys assisting engineers and project owners as they build savings and success in their industries.



[CONTACT US](#)

[FIND A REP](#)