

# Champion Fiberglass STRUT

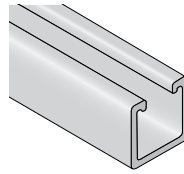
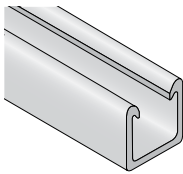
## CROSS REFERENCE GUIDE



### CHANNEL

Heavy Duty

Standard Duty

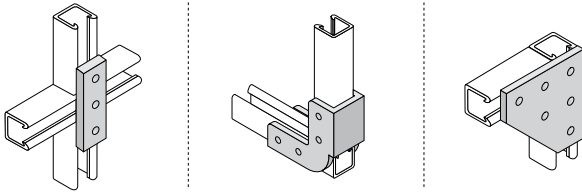


#### MATERIAL TYPES

P = Polyester PU = Polyurethane V = Vinyl Ester

AICKINSTRUT PART NO	CHAMPION STRUT PART NO	UNISTRUT PART NO	ENDURO PART NO	B-LINE PART NO	DESCRIPTION	MATERIAL TYPE
20P-1000	<b>CS-S10-10P</b>	20P-1000			Heavy duty 1-1/8", solid – 10 ft	P
20P-1200	<b>CS-S10S-10P</b>	20P-1200			Heavy duty 1-1/8", slotted – 10 ft	P
20P-2000	<b>CS-S20-10P</b>	20P-2000			Heavy duty 1-5/8", solid – 10 ft	P
20P-2000-SST	<b>CS-SST15-10P</b>	20P-2000-SST	EC-158	BFP22-10	Standard duty 1-5/8", solid – 10 ft	P
20P-2100	<b>CS-S20D-10P</b>	20P-2100			Heavy duty 1-5/8", back to back – 10 ft	P
20P-2100-SST	<b>CS-SST15D-10P</b>	20P-2100-SST	EC-158D	BFP22A-10	Standard duty 1-5/8", back to back – 10 ft	P
20P-2200	<b>CS-S20S-10P</b>	20P-2200			Heavy duty 1-5/8", slotted – 10 ft	P
20P-2200-SST	<b>CS-SST15S-10P</b>	20P-2200-SST	EC-158H	BFP-22-10-SH	Standard duty 1-5/8", slotted – 10 ft	P
20P-2300	<b>CS-S20CI-10P</b>	20P-2300			Heavy duty 1-5/8", concrete insert – 10 ft	P
20P-2300-SST	<b>CS-SST15CI-10P</b>	20P-2300-SST			Standard duty 1-5/8", concrete insert – 10 ft	P
20V-1000	<b>CS-S10-10V</b>	20V-1000			Heavy duty 1-1/8", solid – 10 ft	V
20V-1200	<b>CS-S10S-10V</b>	20V-1200			Heavy duty 1-1/8", slotted – 10 ft	V
20V-2000	<b>CS-S20-10V</b>	20V-2000			Heavy duty 1-5/8", solid – 10 ft	V
20V-2000-SST	<b>CS-SST15-10V</b>	20V-2000-SST	EC-VE-158	BFV-22-10	Standard duty 1-5/8", solid – 10 ft	V
20V-2100	<b>CS-S20D-10V</b>	20V-2100			Heavy duty 1-5/8", back to back – 10 ft	V
20V-2100-SST	<b>CS-SST15D-10V</b>	20V-2100-SST	EC-VE-158D	BFV22A-10	Standard duty 1-5/8", back to back – 10 ft	V
20V-2200	<b>CS-S20S-10V</b>	20V-2200			Heavy duty 1-5/8", slotted – 10 ft	V
20V-2200-SST	<b>CS-SST15S-10V</b>	20V-2200-SST	EC-VE-158H	BFV-22-10-SH	Standard duty 1-5/8", slotted – 10 ft	V
20V-2300	<b>CS-S20CI-10V</b>	20V-2300			Heavy duty 1-5/8", concrete insert – 10 ft	V
20V-2300-SST	<b>CS-SST15CI-10V</b>	20V-2300-SST			Standard duty 1-5/8", concrete insert – 10 ft	V

## CHANNEL FITTINGS



## MATERIAL TYPES

P = Polyester PU = Polyurethane V = Vinyl Ester

AICKINSTRUT PART NO	CHAMPION STRUT PART NO	UNISTRUT PART NO	ENDURO PART NO	B-LINE PART NO	DESCRIPTION	MATERIAL TYPE
20P-2500	<b>CS-2500P</b>		CP-100	BFV340	Flat 3-1/4", two-hole, rectangular fitting	P
20P-2502	<b>CS-2502P</b>	20P-2502	CP-103	BFV557	Flat 4-7/8", three-hole, rectangular fitting	P
20P-2504	<b>CS-2504P</b>	20P-2504	CP-104	BFV341	Flat 6-1/2", four-hole, rectangular fitting	P
20P-2506	<b>CS-2506P</b>	20P-2506	CP-105	BFV342	Flat 8-1/8", five-hole, rectangular fitting	P
20P-2508	<b>CS-2508P</b>	20P-2508	CP-109	BFV140	Flat 3-1/4" x 3-1/4", three-hole, L-shaped fitting	P
20P-2510	<b>CS-2510P</b>	20P-2510	CP-113	BFV143	Flat 4-7/8" x 3-1/4", four-hole, L-shaped fitting	P
20P-2512	<b>CS-2512P</b>		CP-110		Flat 3-1/4" x 4-7/8", four-hole, T-shaped fitting	P
20P-2514	<b>CS-2514P</b>		CP-112	BFV135	Flat 3-1/4" x 3-1/4", three-hole, five-sided fitting	P
20P-2516	<b>CS-2516P</b>		CP-114	BFV142	Flat 4-7/8" x 3-1/4", four-hole, five-sided fitting	P
20P-2518	<b>CS-2518P</b>		CP-111	BFV132	Flat, 4-7/8" x 4-7/8", five-hole, plus-shaped fitting	P
20P-2520	<b>CS-2520P</b>	20P-2520	CP-115	BFV133	Flat 4-7/8" x 4-7/8", six-hole, five-sided fitting	P
20P-2522	<b>CS-2522P</b>	20P-2522	CP-116	BFV337	Flat, 3-1/4" x 3-1/4", three-hole fitting, six-sided fitting	P
20P-2524	<b>CS-2524P</b>	20P-2524	CP-117	BFV136	Flat, 3-1/4" x 4-7/8", four-hole, six-sided fitting	P
20P-2526	<b>CS-2526P</b>	20P-2526	CP-118	BFV532	Flat, 4-7/8" x 4-7/8", five-hole, six-sided fitting	P
20P-2528	<b>CS-2528P</b>	20P-2528			Flat, 5-1/4", 2-hole, fitting, one end rounded	P
20P-2530	<b>CS-2530P</b>	20P-2530	CP-119		Flat, 3-1/4" x 8-1/8", six-hole, six-sided fitting	P
20P-2534	<b>CS-2534P</b>	20P-2534	CP-120	BFV334	Flat, 4-7/8" x 8-1/8", seven-hole, eight-sided fitting	P
20P-2540	<b>CS-2540P</b>	20P-2540			Flat, 5-1/4" x 5-1/4", four-hole, L-shaped fitting	P
20P-2541	<b>CS-2541P</b>			BFV104	Flat, 4" x 4", four-hole, L-shaped fitting	P
20P-2542	<b>CS-2542P</b>			BFV558	Flat, 3" x 3-1/4", four-hole, L-shaped fitting	P
20P-2800	<b>CS-2500P (flat)</b>				Grooved, 3-1/4", two-hole, rectangular fitting	P
20P-2802	<b>CS-2502P (flat)</b>				Grooved, 4-7/8", three-hole, rectangular fitting	P
20P-2804	<b>CS-2504P (flat)</b>				Grooved, 6-1/2", four-hole, rectangular fitting	P
20P-2806	<b>CS-2506P (flat)</b>				Grooved, 8-1/8", five-hole, rectangular fitting	P
20P-2808	<b>CS-2508P (flat)</b>				Grooved, 3-1/4" x 3-1/4", three-hole, L-shaped fitting	P
20P-2816L/R	<b>CS-2516P (flat)</b>				Grooved, 4-7/8" x 3-1/4", four-hole, five-sided fitting	P
20P-2820	<b>CS-2520P (flat)</b>				Grooved, 4-7/8" x 4-7/8", six-hole, five-sided fitting	P
20P-2824	<b>CS-2524P (flat)</b>				Grooved, 3-1/4" x 4-7/8", four-hole, six-sided fitting	P
20P-2826	<b>CS-2526P (flat)</b>				Grooved, 4-7/8" x 4-7/8", five-hole, six-sided fitting	P
20P-2828	<b>CS-2528P (flat)</b>				Grooved, 5-1/4", two-hole, fitting, one end rounded	P
20P-2830	<b>CS-2530P (flat)</b>				Grooved, 3-1/4" x 8-1/8", six-hole, six-sided fitting	P
20P-2834	<b>CS-2534P (flat)</b>				Grooved, 4-7/8" x 8-1/8", seven-hole, eight-sided fitting	P
20P-2840	<b>CS-2540P (flat)</b>				Grooved, 5-1/4" x 5-1/4", 45-degree, four-hole, L-shaped fitting	P

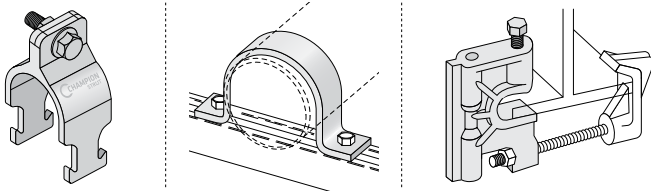
**CHANNEL FITTINGS** *cont.*

AICKINSTRUT PART NO	CHAMPION STRUT PART NO	UNISTRUT PART NO	ENDURO PART NO	B-LINE PART NO	DESCRIPTION	MATERIAL TYPE
20V-2500	<b>CS-2500V</b>	20V-2500	CP-VE-100		Flat 3-1/4", two-hole, rectangular fitting	V
20V-2502	<b>CS-2502V</b>	20V-2502	CP-VE-103		Flat 4-7/8", three-hole, rectangular fitting	V
20V-2504	<b>CS-2504V</b>	20V-2504	CP-VE-104		Flat 6-1/2", four-hole, rectangular fitting	V
20V-2506	<b>CS-2506V</b>	20V-2506	CP-VE-105		Flat 8-1/8", five-hole, rectangular fitting	V
20V-2508	<b>CS-2508V</b>	20V-2508	CP-VE-109		Flat 3-1/4" x 3-1/4", three-hole, L-shaped fitting	V
20V-2510	<b>CS-2510V</b>	20V-2510	CP-VE-113		Flat 4-7/8" x 3-1/4", four-hole, L-shaped fitting	V
20V-2512	<b>CS-2512V</b>		CP-VE-110		Flat 3-1/4" x 4-7/8", four-hole, T-shaped fitting	V
20V-2514	<b>CS-2514V</b>		CP-VE-112		Flat 3-1/4" x 3-1/4", three-hole, five-sided fitting	V
20V-2516	<b>CS-2516V</b>	20V-2516	CP-VE-114		Flat 4-7/8" x 3-1/4", four-hole, five-sided fitting	V
20V-2518	<b>CS-2518V</b>		CP-VE-111		Flat, 4-7/8" x 4-7/8", five-hole, plus-shaped fitting	V
20V-2520	<b>CS-2520V</b>	20V-2520	CP-VE-115		Flat 4-7/8" x 4-7/8", six-hole, five-sided fitting	V
20V-2522	<b>CS-2522V</b>	20V-2522	CP-VE-116		Flat, 3-1/4" x 3-1/4", three-hole fitting, six-sided fitting	V
20V-2524	<b>CS-2524V</b>	20V-2524	CP-VE-117		Flat, 3-1/4" x 4-7/8", four-hole, six-sided fitting	V
20V-2526	<b>CS-2526V</b>	20V-2526	CP-VE-118		Flat, 4-7/8" x 4-7/8", five-hole, six-sided fitting	V
20V-2528	<b>CS-2528V</b>	20V-2528			Flat, 5-1/4", two-hole, fitting, one end rounded	V
20V-2530	<b>CS-2530V</b>	20V-2530	CP-VE-119		Flat, 3-1/4" x 8-1/8", six-hole, six-sided fitting	V
20V-2534	<b>CS-2534V</b>	20V-2534	CP-VE-120		Flat, 4-7/8" x 8-1/8", seven-hole, eight-sided fitting	V
20V-2540	<b>CS-2540V</b>	20V-2540			Flat, 5-1/4" x 5-1/4", 45-degree, four-hole, L-shaped fitting	V
20V-2541	<b>CS-2541V</b>	20V-2541			Flat, 4" x 4", four-hole, L-shaped fitting	V
20V-2542	<b>CS-2542V</b>	20V-2542			Flat, 3" x 3-1/4", four-hole, L-shaped fitting	V
20V-2800	<b>CS-2500V (flat)</b>				Grooved, 3-1/4", two-hole, rectangular fitting	V
20V-2802	<b>CS-2502V (flat)</b>				Grooved, 4-7/8", three-hole, rectangular fitting	V
20V-2804	<b>CS-2504V (flat)</b>				Grooved, 6-1/2", four-hole, rectangular fitting	V
20V-2806	<b>CS-2506V (flat)</b>				Grooved, 8-1/8", five-hole, rectangular fitting	V
20V-2816L/R	<b>CS-2516V (flat)</b>				Grooved, 4-7/8" x 3-1/4", four-hole, five-sided fitting	V
20V-2820	<b>CS-2520V (flat)</b>				Grooved, 4-7/8" x 4-7/8", six-hole, five-sided fitting	V
20V-2822	<b>CS-2522V (flat)</b>				Grooved, 3-1/4" x 3-1/4", three-hole fitting, six-sided fitting	V
20V-2824	<b>CS-2524V (flat)</b>				Grooved, 3-1/4" x 4-7/8", four-hole, six-sided fitting	V
20V-2828	<b>CS-2528V (flat)</b>				Grooved, 5-1/4", two-hole, fitting, one end rounded	V
20V-2834	<b>CS-2534V (flat)</b>				Grooved, 4-7/8" x 8-1/8", seven-hole, eight-sided fitting	V
50PU-2008	<b>CS-132</b>	50PU-2008			90-degree bend to fit 1-5/8" strut, 4-7/8" x 4-7/8", four holes per side	PU
50PU-2045	<b>CS-133</b>	50PU-2045			Bend to fit 1-5/8" strut, 5-1/2" L x 4-1/2" H, four holes per side	PU
50PU-2090	<b>CS-134</b>	50PU-2090			90-degree bend to fit 1-5/8" strut, 4-7/8" x 4-7/8", four holes	PU
50PU-2538	<b>CS-130</b>	50PU-2538			4" H x 5" W, five-hole, six-sided fitting	PU
50PU-2611	<b>CS-121</b>	50PU-2611			Three-hole channel fitting 3-1/2" H with 1-7/8" H setback	PU
50PU-2611-SP	<b>CS-127</b>				Two-hole, 90-degree channel fitting, 1-7/8" H	PU



**CHANNEL FITTINGS** *cont.*

AICKINSTRUT PART NO	CHAMPION STRUT PART NO	UNISTRUT PART NO	ENDURO PART NO	B-LINE PART NO	DESCRIPTION	MATERIAL TYPE
50PU-2613	<b>CS-126</b>	50PU-2613			Three-hole channel fitting, 5-13/32" W	PU
50PU-2616	<b>CS-200</b>	50PU-2616			Four-hole, strut fitting, 7-1/4" W x 2-5/32" H x 1-7/8" W	PU
50PU-2636	<b>CS-135 (flat)</b>	50PU-2636	CP-501	BFV371-2G	Grooved 4" H x 1-5/8" with channel fitting	PU
50PU-2636A	<b>CS-135 (flat)</b>	50PU-2636A			Grooved 4" H x 1-5/8" with channel fitting	PU
50PU-2636B	<b>CS-135 (flat)</b>	50PU-2636B			Grooved 4" H x 1-5/8" with channel fitting	PU
50PU-2936	<b>CS-135 (flat)</b>	50PU-2936			Grooved 4" H x 1-5/8" with channel fitting	PU

**PIPE CLAMPS, PIPE STRAPS AND BEAM CLAMPS****MATERIAL TYPES**

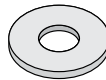
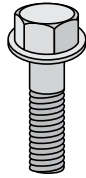
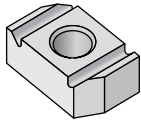
P = Polyester PU = Polyurethane V = Vinyl Ester

AICKINSTRUT PART NO	CHAMPION STRUT PART NO	UNISTRUT PART NO	ENDURO PART NO	B-LINE PART NO	DESCRIPTION	MATERIAL TYPE
PCR-050	<b>CS-PC-050</b>	PCR-050	PC-1609N	BFV2008	Rigid Pipe Clamps, 1/2"	PU
PCR-075	<b>CS-PC-075</b>	PCR-075	PC-1610N	BFV2009	Rigid Pipe Clamps, 3/4"	PU
PCR-100	<b>CS-PC-100</b>	PCR-100	PC-1611N	BFV2010	Rigid Pipe Clamps, 1"	PU
PCR-125	<b>CS-PC-125</b>	PCR-125	PC-1612N	BFV2011	Rigid Pipe Clamps, 1-1/4"	PU
PCR-150	<b>CS-PC-150</b>	PCR-150	PC-1613N	BFV2012	Rigid Pipe Clamps, 1-1/2"	PU
PCR-200	<b>CS-PC-200</b>	PCR-200	PC-1614N	BFV2013	Rigid Pipe Clamps, 2"	PU
PCR-250	<b>CS-PC-250</b>	PCR-250	PC-1615N	BFV2014	Rigid Pipe Clamps, 2-1/2"	PU
PCR-300	<b>CS-PC-300</b>	PCR-300	PC-1616N	BFV2015	Rigid Pipe Clamps, 3"	PU
PCR-400	<b>CS-PC-400</b>	PCR-400	PC-1618N	BFV2017	Rigid Pipe Clamps, 4"	PU
PCR-600	<b>CS-PC-600</b>	PCR-600			Rigid Pipe Clamps, 6"	PU
PCR-800	<b>CS-PC-800</b>	PCR-800			Rigid Pipe Clamps, 8"	PU
PS050	<b>CS-PS-050</b>	PS050			Two-hole Pipe Straps, 1/2"	P
PS075	<b>CS-PS-075</b>	PS075			Two-hole Pipe Straps, 3/4"	P
PS100	<b>CS-PS-100</b>	PS100			Two-hole Pipe Straps, 1"	P
PS150	<b>CS-PS-150</b>	PS150			Two-hole Pipe Straps, 1-1/2"	P
PS200	<b>CS-PS-200</b>	PS200		BFP2400-2	Two-hole Pipe Straps, 2"	P
PS250	<b>CS-PS-250</b>	PS250			Two-hole Pipe Straps, 2-1/2"	P
PS300	<b>CS-PS-300</b>	PS300		BFP2400-3	Two-hole Pipe Straps, 3"	P
PS350	<b>CS-PS-350</b>	PS350			Two-hole Pipe Straps, 3-1/2"	P
PS400	<b>CS-PS-400</b>	PS400		BFP2400-4	Two-hole Pipe Straps, 4"	P
PS500	<b>CS-PS-500</b>	PS500			Two-hole Pipe Straps, 5"	P
PS600	<b>CS-PS-600</b>	PS600		BFP2400-6	Two-hole Pipe Straps, 6"	P
PS800	<b>CS-PS-800</b>	PS800			Two-hole Pipe Straps, 8"	P
PS1000	<b>CS-PS-1000</b>	PS1000			Two-hole Pipe Straps, 10"	P

**PIPE CLAMPS, PIPE STRAPS AND BEAM CLAMPS** *cont.*

AICKINSTRUT PART NO	CHAMPION STRUT PART NO	UNISTRUT PART NO	ENDURO PART NO	B-LINE PART NO	DESCRIPTION	MATERIAL TYPE
PS1200	<b>CS-PS-1200</b>	PS1200			Two-hole Pipe Straps, 12"	P
PS1400	<b>CS-PS-1400</b>	PS1400			Two-hole Pipe Straps, 14"	P
PS1600	<b>CS-PS-1600</b>	PS1600			Two-hole Pipe Straps, 16"	P
PS1800	<b>CS-PS-1800</b>	PS1800			Two-hole Pipe Straps, 18"	P
375PU-BC	<b>CS-BC-375</b>	375PU-BC	BCS-3/8	BFV755-3/8	Molded Beam Clamp, 3/8"	PU
375PU-BCCLP	<b>CS-BCC-375</b>	375PU-BCCLP			Beam Clip, 3/8"	PU
500PU-BC	<b>CS-BC-500</b>	500PU-BC	BCS-1/2	BFV755-1/2	Molded Beam Clamp, 1/2"	PU
RGBC1	<b>CS-BCH-375</b>	RGBC1		BFV751-3/8	Beam Clamps, 3/8"	V
RGBC2	<b>CS-BCH-500</b>	RGBC2		BFV751-1/2	Beam Clamps, 1/2"	V
RGBC3	<b>CS-BCH-625</b>	RGBC3		BFV751-5/8	Beam Clamps, 5/8"	V
20V-2BC-25	<b>CS-FBC-250V</b>	20V-2BC-25			I-Beam Clamp Assembly, 1/4"	V
20V-2BC-37	<b>CS-FBC-375V</b>	20V-2BC-37			I-Beam Clamp Assembly, 3/8"	V
20V-2BC-50	<b>CS-FBC-500V</b>	20V-2BC-50			I-Beam Clamp Assembly, 1/2"	V

**HARDWARE – NUTS, BOLTS AND WASHERS**



**MATERIAL TYPES**

P = Polyester PU = Polyurethane V = Vinyl Ester

AICKINSTRUT PART NO	CHAMPION STRUT PART NO	UNISTRUT PART NO	ENDURO PART NO	B-LINE PART NO	DESCRIPTION	MATERIAL TYPE
250E-999	<b>CS-FW-250</b>	250E-999			Flat Washers, 1/4"	PVC
250PU-000	<b>CS-HN-250</b>	250PU-000			Hex Nut, 1/4" – 20	PU
250PU-075	<b>CS-FB-250-075</b>	250PU-075			1/4" Hex Head Flanged Bolts, 1/4" x 3/4"	PU
250PU-100	<b>CS-FB-250-100</b>	250PU-100			1/4" Hex Head Flanged Bolts, 1/4" x 1"	PU
250PU-150	<b>CS-FB-250-150</b>	250PU-150			1/4" Hex Head Flanged Bolts, 1/4" x 1-1/2"	PU
375E-999	<b>CS-FW-375</b>	375E-999			Flat Washer, 3/8"	PVC
375PU-000	<b>CS-HN-375</b>	375PU-000	FN-038	BFVHN 3/8	Hex Nut, 3/8" – 16	PU
375PU-125	<b>CS-HB-375-125</b>	375PU-125		BFVHHCS 3/8 X 1-1/4	3/8" Hex Head Bolts, 3/8" x 1-1/4"	PU
375PU-150	<b>CS-HB-375-150</b>	375PU-150		BFVHHCS 3/8 X 1-1/2	3/8" Hex Head Bolts, 3/8" x 1-1/2"	PU
375PU-200	<b>CS-HB-375-200</b>	375PU-200		BFVHHCS 3/8 X 2	3/8" Hex Head Bolts, 3/8" x 2"	PU
375PU-250	<b>CS-HB-375-250</b>	375PU-250		BFVHHCS 3/8 X 2 -1/2	3/8" Hex Head Bolts, 3/8" x 2-1/2"	PU
375PU-300	<b>CS-HB-375-300</b>	375PU-300			3/8" Hex Head Bolts, 3/8" x 3"	PU
375PU-350	<b>CS-HB-375-350</b>	375PU-350			3/8" Hex Head Bolts, 3/8" x 3-1/2"	PU
375PU-CN	<b>CS-CN-375</b>	375PU-CN		BFV-228WO	Channel Nuts, standard duty, 3/8" – 16	PU
375PU-FN-000	<b>CS-FN-375</b>	375PU-FN-000			Hex Flange Nuts, 3/8" – 16	PU

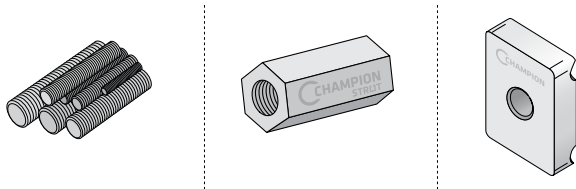
**HARDWARE – NUTS, BOLTS AND WASHERS** *cont.*

AICKINSTRUT PART NO	CHAMPION STRUT PART NO	UNISTRUT PART NO	ENDURO PART NO	B-LINE PART NO	DESCRIPTION	MATERIAL TYPE
375V-000	<b>CS-SN-375</b>	375V-000			Square Head Nuts, 3/8" – 16	V
500E-999	<b>CS-FW-500</b>	500E-999			Flat Washers, 1/2"	PVC
500PU-000	<b>CS-HN-500</b>	500PU-000	FN-050	BFVHN 1/2	Hex Nut, 1/2" – 13	PU
500PU-125	<b>CS-FB-500-125</b>	500PU-125		BFVHHCS 1/2 X 1-1/4	1/2" Hex Head Flanged Bolts, 1/2" x 1-1/4"	PU
500PU-150	<b>CS-FB-500-150</b>	500PU-150		BFVHHCS 1/2 X 1-1/2	1/2" Hex Head Flanged Bolts, 1/2" x 1-1/2"	PU
500PU-200	<b>CS-FB-500-200</b>	500PU-200		BFVHHCS 1/2 X 2	1/2" Hex Head Flanged Bolts, 1/2" x 2"	PU
500PU-250	<b>CS-FB-500-250</b>	500PU-250		BFVHHCS 1/2 X 2-1/2	1/2" Hex Head Flanged Bolts, 1/2" x 2-1/2"	PU
500PU-300	<b>CS-FB-500-300</b>	500PU-300		BFVHHCS 1/2	1/2" Hex Head Flanged Bolts, 1/2"	PU
500PU-350	<b>CS-FB-500-350</b>	500PU-350			1/2" Hex Head Flanged Bolts, 1/2" x 3-1/2"	PU
500PU-CN	<b>CS-CN-500</b>	500PU-CN		BFV-225WO	Channel Nuts, Standard Duty, 1/2" – 13	PU
500PU-FN-000	<b>CS-FN-500</b>	500PU-FN-000			Hex Flange Nuts, 1/2" – 13	PU
500V-000	<b>CS-SN-500</b>	500V-000			Square Head Nuts, 1/2" – 13	V
625E-999	<b>CS-FW-625</b>	625E-999			Flat Washers, 5/8"	PVC
625PU-000	<b>CS-HN-625</b>	625PU-000	FN-0625	BFVHN 5/8	Hex Nut, 5/8" – 11	PU
625PU-125	<b>CS-HB-625-125</b>	625PU-125			5/8" Hex Head Bolts, 5/8" x 1-1/4"	PU
625PU-150	<b>CS-HB-625-150</b>	625PU-150			5/8" Hex Head Bolts, 5/8" x 1-1/2"	PU
625PU-200	<b>CS-HB-625-200</b>	625PU-200			5/8" Hex Head Bolts, 5/8" x 2"	PU
625PU-250	<b>CS-HB-625-250</b>	625PU-250			5/8" Hex Head Bolts, 5/8" x 2-1/2"	PU
625PU-300	<b>CS-HB-625-300</b>	625PU-300			5/8" Hex Head Bolts, 5/8" x 3"	PU
625PU-350	<b>CS-HB-625-350</b>	625PU-350			5/8" Hex Head Bolts, 5/8" x 3-1/2"	PU
625PU-FN-000	<b>CS-FN-625</b>	625PU-FN-000			Hex Flange Nuts, 5/8" – 11	PU
625V-000	<b>CS-SN-625</b>	625V-000			Square Head Nuts, 5/8" – 11	V
UB-050	<b>CS-UB-050</b>	UB-050	EU050	BFV-501-1/2	Non-Metallic U-Bolts, 1/2" includes two polyurethane hex nuts	PU
UB-075	<b>CS-UB-075</b>	UB-075	EU070	BFV-501-3/4	Non-Metallic U-Bolts, 3/4" includes two polyurethane hex nuts	PU
UB-100	<b>CS-UB-100</b>	UB-100	EU100	BFV-501-1	Non-Metallic U-Bolts, 1" includes two polyurethane hex nuts	PU
UB-125	<b>CS-UB-125</b>	UB-125	EU125	BFV-501-1-1/4	Non-Metallic U-Bolts, 1-1/4" includes two polyurethane hex nuts	PU
UB-150	<b>CS-UB-150</b>	UB-150	EU150	BFV-501-1-1/2	Non-Metallic U-Bolts, 1-1/2" includes two polyurethane hex nuts	PU
UB-200	<b>CS-UB-200</b>	UB-200	EU200	BFV-501-2	Non-Metallic U-Bolts, 2" includes two polyurethane hex nuts	PU
UB-250	<b>CS-UB-250</b>	UB-250	EU250	BFV-501-2-1/2	Non-Metallic U-Bolts, 2-1/2" includes two polyurethane hex nuts	PU

**HARDWARE – NUTS, BOLTS AND WASHERS** *cont.*

AICKINSTRUT PART NO	CHAMPION STRUT PART NO	UNISTRUT PART NO	ENDURO PART NO	B-LINE PART NO	DESCRIPTION	MATERIAL TYPE
UB-300	<b>CS-UB-300</b>	UB-300	EU300	BFV-501-3	Non-Metallic U-Bolts, 3" includes two polyurethane hex nuts	PU
UB-350	<b>CS-UB-350</b>	UB-350	EU350	BFV-501-3-1/2	Non-Metallic U-Bolts, 3-1/2" includes two polyurethane hex nuts	PU
UB-400	<b>CS-UB-400</b>	UB-400	EU400	BFV-501-4	Non-Metallic U-Bolts, 4" includes two polyurethane hex nuts	PU

**THREADED ROD & CONNECTORS, SADDLE CLIPS AND STOP LOCK ASSEMBLIES**

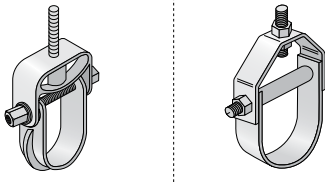


**MATERIAL TYPES**

P = Polyester PU = Polyurethane V = Vinyl Ester

AICKINSTRUT PART NO	CHAMPION STRUT PART NO	UNISTRUT PART NO	ENDURO PART NO	B-LINE PART NO	DESCRIPTION	MATERIAL TYPE
200-3827	<b>CS-TR-375-4</b>	200-3827		BFVATR 3/8 X 48	Threaded Rod, 3/8" – 16, 4' section	V
200-3828	<b>CS-TR-500-4</b>	200-3828		BFVATR 1/2 X 48	Threaded Rod, 1/2" – 13, 4' section	V
200-3829	<b>CS-TR-625-4</b>	200-3829		BFVATR 5/8 X 48	Threaded Rod, 5/8" – 11, 4' section	V
200-3840	<b>CS-TRC-375</b>	200-3840	RC-FRP-038	BFV655-3/8	Threaded Rod Connectors, 3/8" – 16	PU
200-3841	<b>CS-TRC-500</b>	200-3841	RC-FRP-050	BFV655-1/2	Threaded Rod Connectors, 1/2" – 13	PU
200-4217	<b>CS-SC-500</b>	200-4217			Saddle Clips, 1/2"	PU
200-4219	<b>CS-SL-500</b>	200-4219		BFVSL-1/2	Stop-Lock Assemblies, 1/2"	PU
200-4226	<b>CS-SC-375</b>	200-4226			Saddle Clips, 3/8"	PU
200-4227	<b>CS-SL-375</b>	200-4227		BFVSL-3/8	Stop-Lock Assemblies, 3/8"	PU

## CLEVIS HANGERS



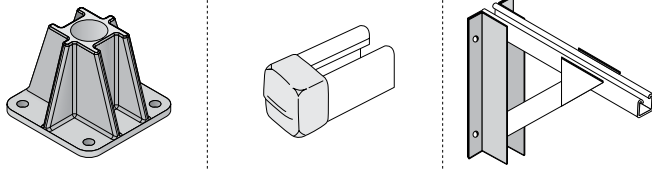
### MATERIAL TYPES

P = Polyester PU = Polyurethane V = Vinyl Ester

AICKINSTRUT PART NO	CHAMPION STRUT PART NO	UNISTRUT PART NO	ENDURO PART NO	B-LINE PART NO	DESCRIPTION	MATERIAL TYPE
100-1501	<b>CS-LCH-15</b>	100-1501			Hand Lay-up Clevis Hangers, 1-1/2" – 2"	P
100-1500	<b>CS-LCH-10</b>	100-1500			Hand Lay-up Clevis Hangers, 1" – 1-1/2"	P
100-1502	<b>CS-LCH-20</b>	100-1502			Hand Lay-up Clevis Hangers, 2" – 2-5/8"	P
100-1503	<b>CS-LCH-25</b>	100-1503			Hand Lay-up Clevis Hangers, 2-1/2" – 3-1/4"	P
100-1504	<b>CS-LCH-30</b>	100-1504			Hand Lay-up Clevis Hangers, 3" – 3-7/8"	P
100-1505	<b>CS-LCH-40</b>	100-1505			Hand Lay-up Clevis Hangers, 4" – 5-1/8"	P
100-1506	<b>CS-LCH-60</b>	100-1506			Hand Lay-up Clevis Hangers, 6" – 7-1/8"	P
100-1507	<b>CS-LCH-80</b>	100-1507		BFP3104-8	Hand Lay-up Clevis Hangers, 8" – 9-1/4"	P
100-1508	<b>CS-LCH-100</b>	100-1508		BFP3104-10	Hand Lay-up Clevis Hangers, 10" – 11-3/8"	P
100-1509	<b>CS-LCH-120</b>	100-1509		BFP3104-12	Hand Lay-up Clevis Hangers, 12" – 13-1/2"	P
100-1510	<b>CS-LCH-140</b>	100-1510			Hand Lay-up Clevis Hangers, 14" – 15-3/4"	P
100-1511	<b>CS-LCH-160</b>	100-1511			Hand Lay-up Clevis Hangers, 16" – 18"	P
100-1512	<b>CS-LCH-190</b>	100-1512			Hand Lay-up Clevis Hangers, 19" – 21"	P
100-1513	<b>CS-LCH-210</b>	100-1513			Hand Lay-up Clevis Hangers, 21" – 22"	P
100-1514	<b>CS-LCH-220</b>	100-1514			Hand Lay-up Clevis Hangers, 22" – 24"	P
CVHPU-100	<b>CS-MCH-10</b>	CVHPU-100	CH-010	BFV3104-1	Molded Clevis Hangers, 1/2" – 1"; max outside pipe diameter 1"	PU
CVHPU-150	<b>CS-MCH-15</b>	CVHPU-150	CH-015	BFV3104-1-1/2	Molded Clevis Hangers, 1-1/4" – 1-1/2"; max outside pipe diameter 1-1/2"	PU
CVHPU-200	<b>CS-MCH-20</b>	CVHPU-200	CH-020	BFV3104-2	Molded Clevis Hangers, 1-1/2" – 2"; max outside pipe diameter 2"	PU
CVHPU-400	<b>CS-MCH-40</b>	CVHPU-400	CH-025	BFV3104-2-1/2, 3, 4	Molded Clevis Hangers, 2-1/2" – 4"; max outside pipe diameter 4"	PU
CVHPU-600	<b>CS-MCH-60</b>	CVHPU-600	CH-030	BFV3104-6	Molded Clevis Hangers, 4-1/2" – 6"; max outside pipe diameter 6"	PU



**POST BASES, END CAPS & WALL BRACKETS**



**MATERIAL TYPES**

P = Polyester PU = Polyurethane V = Vinyl Ester

AICKINSTRUT PART NO	CHAMPION STRUT PART NO	UNISTRUT PART NO	ENDURO PART NO	B-LINE PART NO	DESCRIPTION	MATERIAL TYPE
AIC-EC	<b>CS-EC-S-R</b>	AIC-EC			Red End Cap, 1-5/8"	PVC
AIC-EC-DB	<b>CS-EC-D-R</b>	AIC-EC-DB			Red Double End Cap, 3-1/4"	PVC
20PU-5852	<b>CS-HDPB-S</b>	20PU-5852			2" Square opening, Heavy Duty Post Base, 6-1/4" H x 8" W	PU
20PU-5852-RND	<b>CS-HDPB-R</b>	20PU-5852-RND			2" Round opening, Heavy Duty Post Base, 6-1/4" H x 8" W	PU
20PU-5853	<b>CS-PB-20S</b>	20PU-5853		BFV280SQ	1-5/8" Post Base, 3" H x 5" W	PU
20PU-5855	<b>CS-PB-10S</b>	20PU-5855			1-1/8" Post Base, 3" H x 5" W	PU
20PU-5903	<b>CS-PB-20D</b>	20PU-5903		BFV281SQ	3-1/4", Post Base, 3" H x 6-5/8" W x 5" W	PU
20PU-5905	<b>CS-PB-10D</b>	20PU-5905			2-1/4", Post Base, 3" H x 6-5/8" W x 5" W	PU
CTB06A	<b>CS-SR-06P</b>	CTB06A		BFP409-6	Wall Bracket – 6"	PU
CTB06AV	<b>CS-SR-06V</b>	CTB06AV		BFV409-6	Wall Bracket – 6"	V
CTB09A	<b>CS-SR-09P</b>	CTB09A		BFP409-9	Wall Bracket – 9"	PU
CTB09AV	<b>CS-SR-09V</b>	CTB09AV		BFV409-9	Wall Bracket – 9"	V
CTB12A	<b>CS-SR-12P</b>	CTB12A		BFP409-6-12	Wall Bracket – 12"	PU
CTB12AV	<b>CS-SR-12V</b>	CTB12AV		BFV409-12	Wall Bracket – 12"	V
CTB18A	<b>CS-SR-18P</b>	CTB18A		BFP409-18	Wall Bracket – 18"	PU
CTB18AV	<b>CS-SR-18V</b>	CTB18AV		BFV409-18	Wall Bracket – 18"	V
CTB24A	<b>CS-SR-24P</b>	CTB24A		BFP494-24	Wall Bracket – 24"	PU
CTB24AV	<b>CS-SR-24V</b>	CTB24AV		BFV494-24	Wall Bracket – 24"	V
CTB30A	<b>CS-SR-30P</b>	CTB30A		BFP494-30	Wall Bracket – 30"	PU
CTB30AV	<b>CS-SR-30V</b>	CTB30AV		BFV494-30	Wall Bracket – 30"	V
CTB36A	<b>CS-SR-36P</b>	CTB36A		BFP494-36	Wall Bracket – 36"	PU
CTB36AV	<b>CS-SR-36V</b>	CTB36AV		BFV494-36	Wall Bracket – 36"	V



6400 Spring Stuebner Rd  
Spring, TX 77389  
Main: 281.655.8900  
Fax: 281.257.2523  
[championfiberglass.com](http://championfiberglass.com)

Champion Fiberglass is also a manufacturer of the following products:



### Champion Duct®

Strong, durable Champion Duct® conduit, fittings, duct bank, and bridge hangers deliver a range of benefits including ease of installation, fire and corrosion resistance, impact resistance, and more. Champion Duct® is used in a variety of applications including transportation, data centers, wastewater treatment and chemical plants.



### Champion Bridge Drain™

Champion Bridge Drain™ is a fiberglass bridge drain system that includes a complete line of fittings, non-metallic accessories, and hangers. Champion Bridge Drain is a versatile, high-strength fiberglass bridge drainage system that can be used in highly corrosive drainage applications including bridges, theme parks, aquariums, pools and underground vaults.



© 2020 by Champion Fiberglass, Inc.  
All rights reserved. This catalog, or parts thereof, may not be reproduced in any other format without written permission of the publishers.

102220